
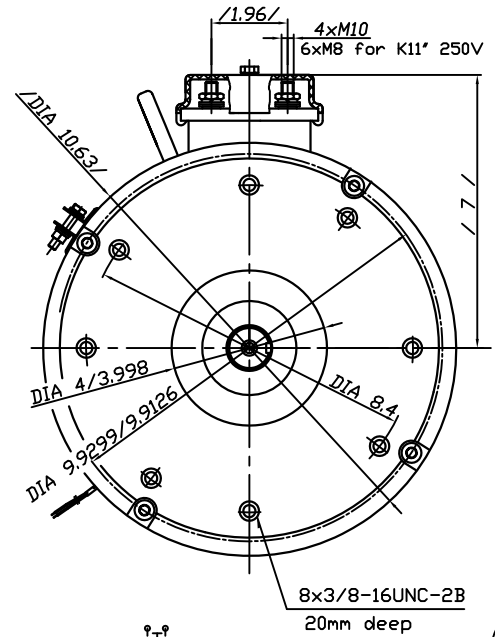


A B C D E F G H

F 18E

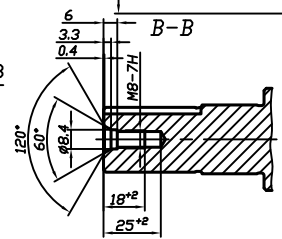
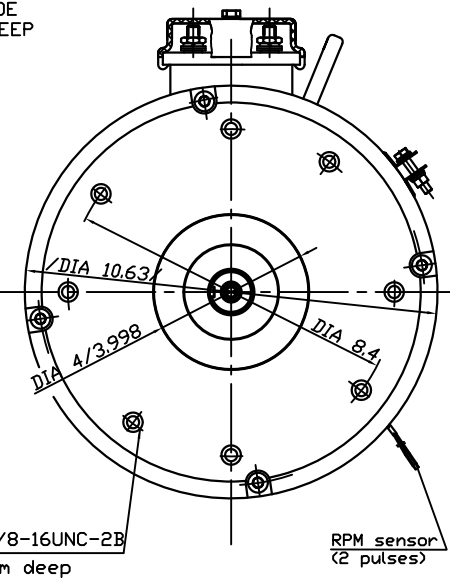
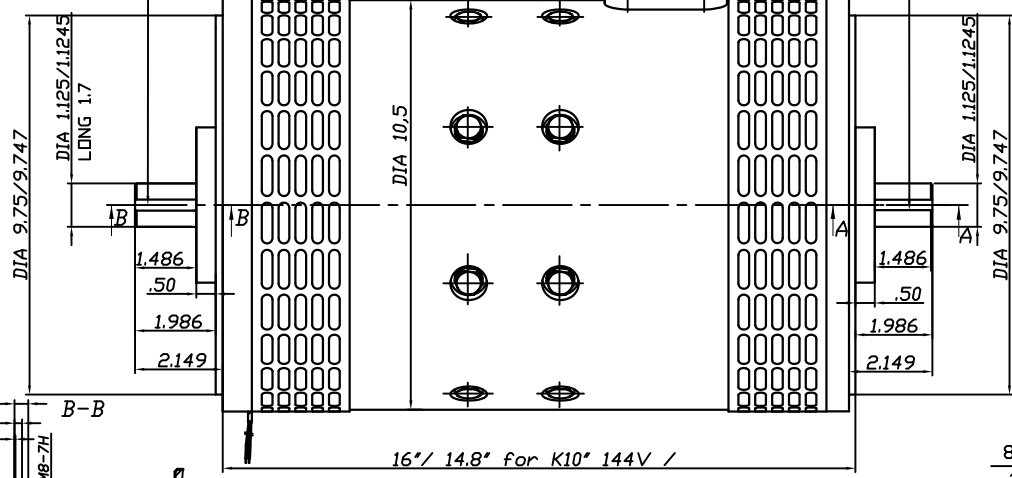
Torque 10⁺² Nm  13
 TERMISTOR
 Termal sensor normally open



KEYWAY
 .252/.250 WIDE
 x .126/.130 DEEP
 x 1.67 LONG

(8.9) / 7.8 for K10^o 144V /

KEYWAY
 .252/.250 WIDE
 x .126/.130 DEEP
 x 1.67 LONG



KOSTOV 10" R20-32880
 KOSTOV 11" R20-32847

Rotation (viewed from drive end)
 CCW: Connect D2 to A2;
 "+" to D1 and "-" to B1
 CW: Connect D1 to A2;
 "+" to D2 and "-" to B1

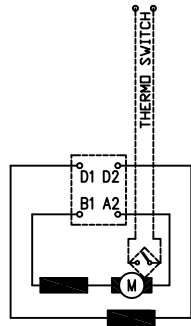


fig.1

Rotation (viewed from drive end)
Series field mode:
 CCW: Connect D2 to D3;
 A2 to D4 "+" to D1 and "-" to B1
 CW: Connect D1 to D4;
 A2 to D3 "+" to D2 and "-" to B1
Parallel field mode:
 Connect D1 to D3 and D2 to D4
 CCW: Connect A2 to D2;
 "+" to D1 and "-" to B1
 CW: Connect B1 to D2;
 "+" to D1 and "-" to A2

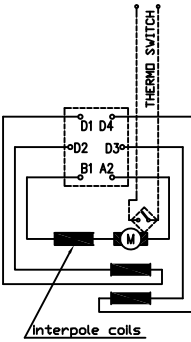
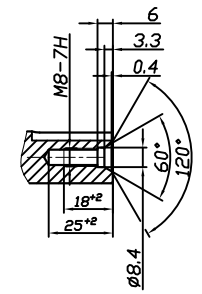
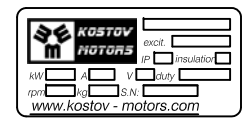


fig.2


Motor	Duty cycle	Field mode	Volts	Amps	RPM	Torque	kW	fig.
K10"	S2-60min	series	90	255	3400	54	19.3	fig. 1
K10"	S2-60min	series	115	270	4500	56	26.2	
K10"	S2-60min	series	139	270	5400	56	31.6	
K11"	S2-60min	parallel	139	250	3950	73	30.3	fig. 2
K11"	S2-60min	parallel	160	250	4600	73	35.0	
K11"	S2-60min	parallel	185	250	5300	73	40.4	
K11"	S2-60min	series	185	210	4250	77	34.1	
K11"	S2-60min	series	212	210	4800	77	38.7	
K11"	S2-60min	series	240	210	5550	77	44.8	



A-A



excitation series
 protection IP 21
 insulation H
 interpoles YES
 weight 81kg (69kg for K10^o 144V)
 rotation rev
 Coating: black

	Balkancar "G. Kostov" JSC
28.01.2013	
24.01.2013	
Rev.	

A B C D E F G H